

OFFERS A VARIETY OF **SIGNS** AND **FLAGS**?

HAS **AXLE PARTS** FOR MY SIZE AND BUDGET?

CARRIES **A LARGE INVENTORY** OF MOBILE HOME PARTS?

SUPPLIES THE **SAFETY EQUIPMENT** I NEED?

THE ANSWER IS



NORCO HYDRAULIC BOTTLE JACKS

Fifty-percent safety overload factor. Fewer parts, internally machined oil passages, smooth bearing surfaces and close tolerances ensure longer life and fewer breakdowns. No-leak "uni-weld" construction. Can be used in vertical, angular or horizontal positions. Carrying handle included.

0410191 12 TON STANDARD; 4/CTN.
 0410190 12 TON SHORTY; 4/CTN.
 0410192 20 TON; 2/CTN.
 0410196 REPAIR KIT FOR 20 TON 76520, 76820 (2-9/16" PLUNGER)
 0410189 REPAIR KIT FOR 12 TON (2-9/16" PLUNGER), OLD STYLE
 0410193 OIL FILLER PLUG; 25/CTN.
 0410197 REPAIR KIT FOR 12 TON FOR NEW STYLE WITH "A" PART NUMBER



THE EZ LOCK

Now one lock fits more than 30 couplers. The EZ Lock Model T-33 Universal Coupler Lock is precision made of heavy grade aircraft aluminum and will not rust. It features a 3/4" steel locking pin, for use with large heavy duty padlock Model TL-45 (not included). U.S. Patent # D436,064. Fits large 8,000 and 10,000 lb. Atwood couplers used on many cargo style trailers.

0411222



Alternamats®

NEVER GET STUCK AGAIN!
 SAVE TIME & MONEY!



- 1/2" 100% recycled polyethylene plastic
- Virtually indestructible, even in harsh conditions
- Double-sided, skid and slip resistant
- Low cost alternative to fiberglass mats
- Easily portable
- Maintenance free
- 6 Year Warranty from date of purchase

Get vehicles and equipment over lawns, through mud and across soft terrain while saving labor, bog-down time, towing charges and ground restoration fees—perfect for set-ups.

0265301 2' X 4'

0265302 2' X 6'

0265303 2' X 8'

0265304 4' X 8'

AMBER MINIBAR



Shatter-resistant polycarbonate outer dome, non-corroding molded nylon base, low current consumption, easy to service with modular parts.

55 watt Halogen light, 8 amp draw. 17" x 4.75".

0340856 PERMANENT MOUNT (9200HA)

0340857 MAGNETIC MOUNT, ADAPTER & CORD (9200HMA)

0340859 REPLACEMENT BULB (2073-795)

SELECTABLE DOUBLE OR QUAD FLASH



Field selectable flash pattern via internal jumper: standard quad flash or selectable double flash. Virgin Lexan, twist-off lens. Durable and lightweight polycarbonate plastic universal flange base. Completely encapsulated circuit for increased weather and shock resistance. Automatic low voltage shutdown below 9.5V DC.

Operates automatically 12V DC - 48V DC. Amp draw: 2.0 Amps at 12V DC. Joule rating: 7 joule double flash; 10 joule quad flash. Flash rate: 80 DFPM/65 QFPM. 4-3/4" tall x 6-13/32" dia.

0340860 (255TS)

OVER SIZE LOAD SIGN

20" X 8' in nylon, black on yellow, one sided - oversize load.

0342016



RED FLAG & CLIP KIT

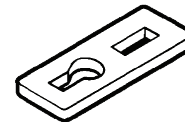
Meets regulations. Two bright red ravel-proof nylon tricot flags and two plastic flag clips. Clear-bagged.

0341907 18" X 18"



PLASTIC CLIPS

0341909



FLAG & STAFF

Nylon tricot flag mounted on heavy-duty 36" staff. Ideal for front of tow trucks where required. 24" x 24".

0341905



RED FLAG

Red tricot nylon, plain edges. High level of reflectancy. In packs of 6. 240/Ctn.

0341911 18" X 18"



18" SHOCK CORD

0342101 100/CTN

TARP STRAPS

Trucker's hard rubber snubbers with iodized S-hooks for superior resiliency and long life.

0342102 15"; 50/CTN.

0342103 20"; 50/CTN.

0342104 31"; 50/CTN.



OVER SIZE LOAD (Ohio DOT)

Vinyl mesh open weave meets Ohio DOT regulations. 12" x 60" with 8" letters.

0342003



LUG BOLT

1/2" dia. For use with cast hubs that are drilled and tapped.

0154109 1/2 - 13 THREADS. 2-1/4" LONG.

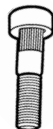
0153108 1/2 - 20 THREADS. 1-7/8" LONG.



LUG STUD

Plated 1/2" dia., 2" long, 1/2-20 threads. Fits only Continental axles with formed steel hubs.

0157124



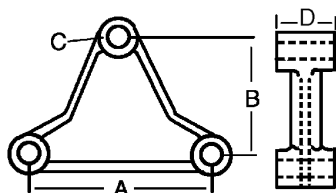
LUG NUT

Plated steel, 1/2" with 20 threads per inch. Heavy hex.

0157130



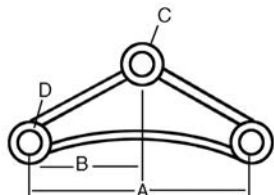
TRIANGLE CAST EQUALIZER



Rugged cast. Use 1/2" or 9/16" dia. shackle bolts.

STOCK #	A	B	C	D
0157170	6"	4"	9/16"	1-3/4"

BANANA EQUALIZER



Heavy 1/4" steel with new strong design to distribute load, preventing undue stress to axles or mobile home frame. Uses 1/2" or 9/16" dia. shackle bolts.

STOCK #	A	B	C	D
0157164	5-5/8"	2-13/16"	9/16"	9/16"

SHACKLE LINK

1/4" thick steel, 1-1/4" wide. Use with 1/2" or 9/16" dia. shackle bolt to connect to equalizer or to spring hanger.

0157162 2-9/16" HOLE CENTER

0157163 2-1/4" HOLE CENTER



DUST CAP

Universal plated, will fit most axles, keeps grease in and dirt out to protect bearings.

0156900



SHACKLE BOLT & NUT

Steel, 9/16" dia. and 3" long. Hex lock nut included.

0157166



U-BOLT W/NUT

6-3/4" with nuts.

0156925



SPRING HANGER

1/4" thick heavy steel, for use w/ 1-3/4" wide spring.

0157161 3" LONG, DROP 2-1/4". FOR USE WITH 9/16" OR 1/2" DIA. SHACKLE BOLT.

0157168 1-3/4" LONG, DROP 1-1/8". USE ONLY AT SHACKLE END OF SINGLE AXLE SUSPENSIONS.

0157160 3" LONG, DROP 3-1/4". USE WITH 9/16" OR 1/2" DIA. X 3" SHACKLE BOLT.



UNIVERSAL RIM CLAMP

Heavy-cast. Universal will fit most mobile home axles, fits axles using either lug bolts or lug studs. Sometimes referred to as wedges.

0157125



NITRILE GLOVES

Ambidextrous gloves. Nitrile composition eliminates allergic reactions to latex. Powder-free. Beaded cuffs.

0345067 6 MIL M/L 100/CS

0345068 X-LARGE 100/CS

SHOE COVERS

Better liquid & particulate barrier. Breathable, microporous film laminate. Passes NFPA 99 criteria for antistatic materials.

0345038 WHITE, ONE-SIZE, 100/PAIR



DUST MASK

Nuisance mask filters out many types of dust. Lightweight, easy to use. Single fixed strap. Adjustable metal nose band to ensure a secure seal and comfortable fit.

0345055 WHITE, ONE-SIZE



DISPOSABLE RESPIRATOR MASK WITH N95 FILTER

Disposable particulate respirators. Nose clip is color coded for visible size recognition. Incorporates humidity-resistant filter media. Molded cup design. Low breathing resistance. Latex free.

0345057 SIZE MED/LG, BOX/20

0345058 SIZE X-LARGE, BOX/20

ALL LEATHER WORK GLOVES

All Leather Work Gloves

- Front, back & leather cuff
- Double leather palm
- Double Stitched
- Sold as pairs with hang-up display cards



0345016

LEATHER PALM WORK GLOVES

Full leather palm with leather knuckle band & fingers. Split leather cowhide. Double stitched. Heavy canvas gauntlet cuff for added protection. Sold as pairs with hang-up display cards.



0345015

KLEENGUARD A20 COVERALLS

Breathable Particle Protection Apparel



KleenGuard A20 Coveralls are made from Microforce Barrier SMS, a breathable fabric that provides improved barrier protection on submicron-sized particles for a perfect combination of protection and comfort.

The tough, durable cloth-like outer layer is an abrasion-resistant, spunbond polypropylene and the middle layer is an intricate web of microfibers that filter out light, water-based liquids and dry particulates. These white coveralls are ideal for maintenance and general clean-up work, including asbestos handling, lead abatement and fiberglass/cellulose insulation operations.

KLEENGUARD A20 COVERALLS

STOCK #	COLOR	SIZE	CASE QTY
0345031	WHITE	LARGE	24
0345032	WHITE	X LARGE	24
0345033	WHITE	2X LARGE	24
0345034	WHITE	3X LARGE	20
0345035	WHITE	4X LARGE	25

KLEENGUARD HOODED A20 COVERALLS

STOCK #	COLOR	SIZE	CASE QTY
0345041	WHITE	LARGE	24
0345042	WHITE	X LARGE	24
0345043	WHITE	2X LARGE	24
0345044	WHITE	3X LARGE	20
0345045	WHITE	4X LARGE	20

Zipper Front Elastic: Back, Wrists & Ankles

SMOKE AND CARBON MONOXIDE ALARMS



Hardwired Smoke Alarms

BRK® hardwired smoke alarms are designed to be easy to install, easy to maintain, and quality-engineered for years of virtually maintenance-free service. Meet UL 217 standard - single station smoke alarms. UL mandated repeating alarm horn pattern (85 dB)-3 beeps, pause, 3 beeps.

10-Year Limited Warranty

0141302 9120
0141305 9120B 9V BATTERY BACK-UP
0141307 7010B 9V BATTERY BACK-UP W/
PHOTOELECTRIC SMOKE SENSOR



Hardwired Smoke and CO Combo Alarm

A state-of-the-art hardwired with battery backup smoke/CO combo alarm that features a photoelectric smoke sensing chamber, an electrochemical CO sensor and end of life signal. Meets both UL 217 & UL 2034 standards - single and multiple station smoke & carbon monoxide alarms. UL mandated repeating alarm horn patterns (85 dB)-3 beeps, pause, 3 beeps and 4 fast beeps, pause, 4 fast beeps.

7-Year Limited Warranty

0250100 SC7010B



First Alert Battery CO Alarm

Designed to be easy to install, easy to maintain, and quality-engineered for years of virtually maintenance-free service. Meet UL 2034 standard - single station carbon monoxide alarms. UL mandated repeating alarm horn pattern (85 dB)-4 fast beeps, pause, 4 fast beeps.

7-Year Limited Warranty

0250106 C0400B 2 AA BATTERY POWERED
0250109 C0250LB WITH 9V LITHIUM
BATTERY, TAMPER RESISTANT LOCKING PIN



Battery Combination Smoke and CO Alarms

Designed to be easy to install, easy to maintain, and quality-engineered for years of virtually maintenance-free service. Meet UL217 & UL 2034 standards. UL mandated repeating alarm horn patterns (85 dB)-3 beeps, pause, 3 beeps and 4 fast beeps, pause, 4 fast beeps.

7-Year Limited Warranty

0250103 SC02B – 9V ALKALINE BATTERY POWERED



Battery (DC) Smoke Alarms

Basic battery operated smoke alarm perfect for use in existing multi-family applications. Hinged cover for easy battery replacement. Lighted Power and Alarm indicator. Silence feature. Tamper resistant locking pin.

10-Year Limited Warranty

0141303 FG250B 9V BATTERY SMOKE ALARM
0141301 FG250LB 9V LITHIUM BATTERY
SMOKE ALARM



120V AC Hearing Impaired Smart Strobe

This AC hardwired signaling device is designed to meet the needs of the ADA where a 177 candela strobe light is required for hearing impaired residential and institutional applications.

Smart Strobe has separate flash patterns to distinguish between a smoke/heat or CO danger. Bright 177 candela strobe light. 1Hz flash rate meets ADA, ANSI 117.1, NFPA 72 and UL 1971 requirements for visual signaling devices. Can be interconnected with BRK/First Alert smoke, heat and carbon monoxide alarms

10-Year Limited Warranty

0250101 SL2177



GARAGE AND HOME WORKSHOP 10-B:C FIRE EXTINGUISHER-RECHARGEABLE



Fights oil, gasoline and electrical fires around the house. Easy-to-Read Pressure Gauge. Bracket with Strap for Easy Mounting. Sodium Bicarbonate Extinguishing Agent

10-Year Limited Warranty

0340507 6/CTN

RECREATIONAL 5-B:C FIRE EXTINGUISHER-RECHARGEABLE



For recreational use in vans, campers and other RV's. Fights oil, gasoline and electrical fires around the house. Commercial-Grade Metal Valve and Trigger.

Bracket with Strap for Easy Mounting. U.S. Coast Guard Approved. Sodium Bicarbonate Extinguishing Agent.

10-Year Limited Warranty

0340501 6/CTN

5-B:C KITCHEN FIRE EXTINGUISHER



For kitchen use. Fights oil, gasoline and electrical fires around all vehicles. Quick release mounting cap for easy access. Push button pressure check. Sodium Bicarbonate Extinguishing Agent

10-Year Limited Warranty

0340510 6/CTN

5LB. MULTI-PURPOSE 3-A:40-B:C HEAVY DUTY PLUS FIRE EXTINGUISHER-RECHARGEABLE



Commercial, industrial and transportation use. Fights wood, paper, oil, gasoline and electrical fires. Can also be used for truck and other transportation needs with bracket no. BRACKET5. Commercial-Grade Metal Valve and Trigger. Ideal for Offices, Homes and Workshops. Monoammonium Phosphate Extinguishing Agent

12-Year Limited Warranty

0340509 6/CTN.

WEATHER RADIO



- S.A.M.E. Digital Technology – Receive alerts/warnings for your specific area
- Alert Override – Automatically switches from standby to emergency alerts
- Instant Weather – Information direct from the National Weather Service and Environment Canada
- Customize Alerts – Select the alerts that are important to you.
- Get The Important Information You Need – Even in the event of a power outage with the battery backup system*

0340100

PERSONAL FALL RESTRAINT DEVICE



Osha, ANSI compliant. Contains: 50ft lifeline, body harness, anchor, grab rope, lanyard, and container

0345080